

# Round Robin Riddle

---

PROMPT # 2 - BORDER #1



# Round Robin Riddle

---

This challenge is similar to a Round Robin Quilt. The main difference is that you will not pass the project around to other participants. You make the entire quilt yourself. The riddle is that you won't know the requirements for the next round until the following month. There will be one clue given from February to July. Monthly prompts will task you with adding to your quilt top featuring a specified pattern or motif. You choose to interpret each round however you want - following a traditional style (medallion/row-by-row) or making a modern- or art quilt.

Projects are due at the November meeting.

# March Prompt #2 – First Border

---

The requirement for the first border is to add something that is pieced. This could be a repeating block, cornerstone blocks, pieced filler to set center block on point, or a border of triangles or flying geese. The sky is the limit!

YOU CAN USE:

- Any colors
- Any fabrics
- Any techniques
- Any scale

ONE RULE: Whatever you make in one month must connect to the work from the month before.

# Pieced Border Ideas



# Design Tips

---

>As your medallion quilt is built, it radiates from the center. Borders close to the center play a different role than those farther out. **Inner borders**

- 1.either expand or enclose the center, (or can be neutral,) and
- 2.introduce new elements such as colors and shapes.

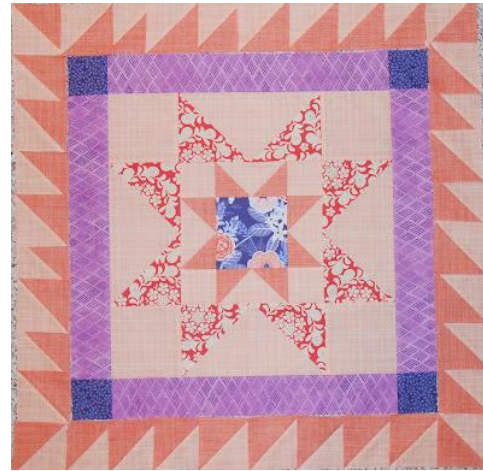
> Audition various layouts when contemplating borders. Particularly with sawtooth borders, play with direction. The points don't always have to go the same direction.

# Sawtooth Borders

---

Value placement will yield different effects.

All borders made with half square triangles



# My First Borders

---



...so far

---

Prompt #1 - Center Block – Something Pointy

Prompt #2 – First Border – Something Pieced